

The logo for danvet, featuring the word "danvet" in a white, lowercase, sans-serif font. The letter 'd' is stylized with a thick, curved stroke that loops around the first 'a'. The background is a solid blue color with a large, faint, abstract shape on the right side that resembles a stylized pig's head or a large 'G'.

KEEPING YOUR PIGS AND BUSINESS HEALTHY

DANVET ÅRSMØDE

PEJSEGÅRDEN · FREDAG D. 8. MARTS 2024

Supersoan





Hvorfor er soens mælkeydelse så vigtig ?

- 80 % af de grise vi mister, dør inden for de første 3 levedøgn
- In DK, dør 60 % af alle "dag-gamle" pattegrise med tom mave (Jessen, 2016)
- Korrekt håndtering af:
 - Polte opdræt,
 - Gyltedrægtighed,
 - Samt drægtige søer er essentiel for optimal mælkeproduktion
- Vi har potentiale til at forbedre pattegrisenes velfærd

Højere mælkeydelse

- Soen kan passe flere pattegrise
- Vi skal ikke bruge så mange ammesøer
 - Resulterer i højere sundhedsstatus hos pattegrisene
 - Lavere antibiotikaforbrug
 - Lavere dødelighed hos pattegrise
 - Højere fravænningsvægt
 - Mindre fravænningsdiarre

Derfor:

- Højere fravænningsvægt = mere robust system

Fravænningsvægt

- Landmanden tjener ingen penge:
 - hvis fravænningsvægten er lavere end 4.5 kg (IPVS 2015)
- En 7.4 kg's gris, har 2.5 gange større sandsynlighed for overlevelse end en 5.6 kg's gris (IPVS 2016)

Supersoen

- Hvad karakteriserer en superso ?
- Hvordan laver man en superso ?
- Kunne alle søer være supersøer ?



1

The background is a solid medium blue. On the right side, there are several overlapping, organic, wave-like shapes in a lighter shade of blue. A large, bold white number '1' is positioned in the center-left area of the image.

Anatomi

A large, stylized, light blue graphic on the right side of the slide, resembling a cross-section of a human head or a complex anatomical structure, with various curved lines and shapes.

Fra anatomibogen 1912

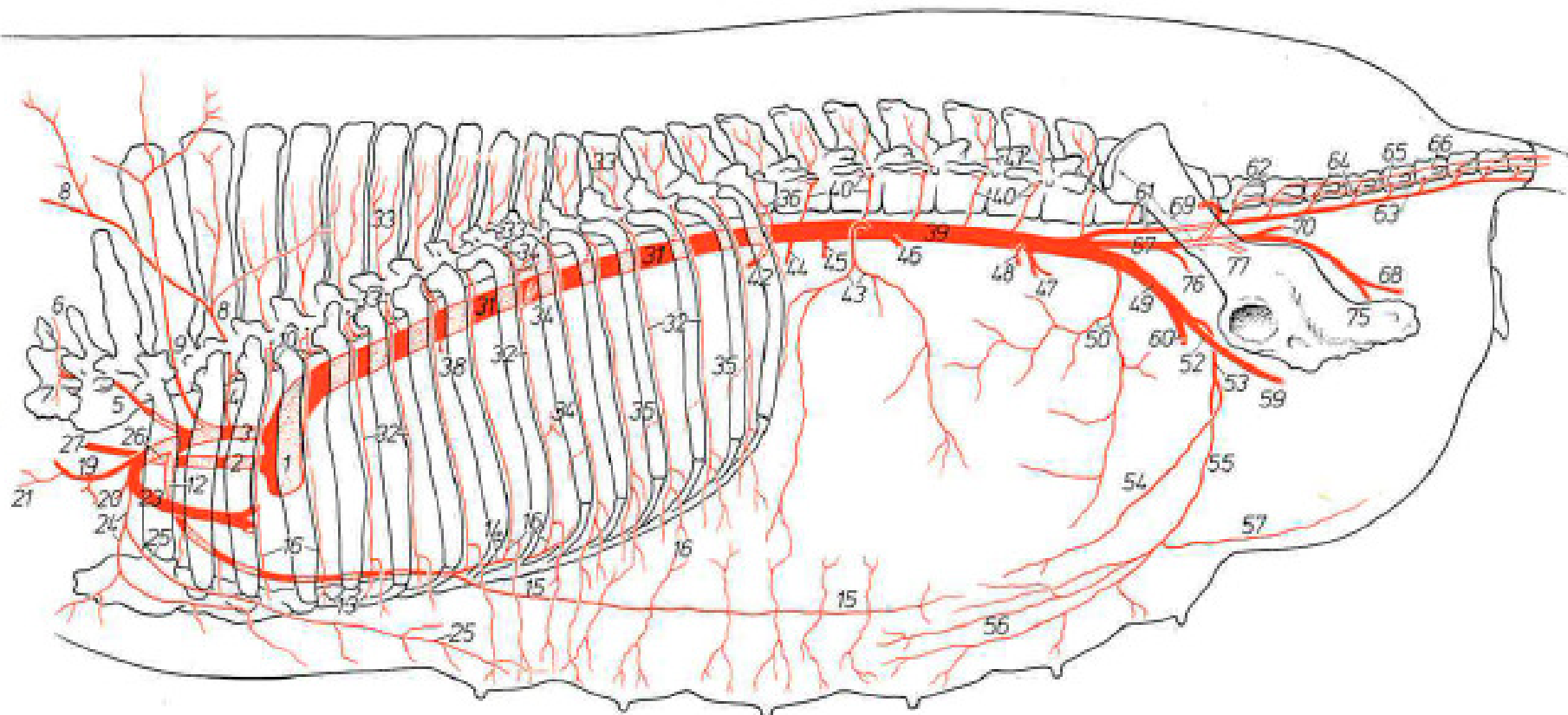


Abb. 16

Diegivende søer på friland



Rigeligt med motion

Kølige omgivelser

Kompenserer for primitivt
fodringskoncept





2

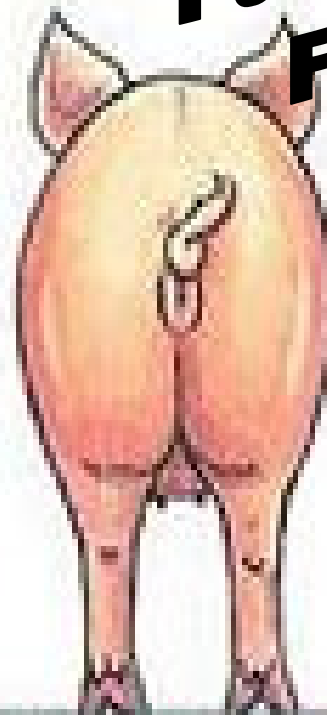
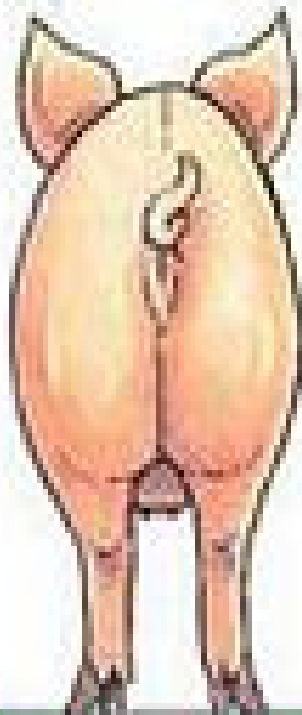
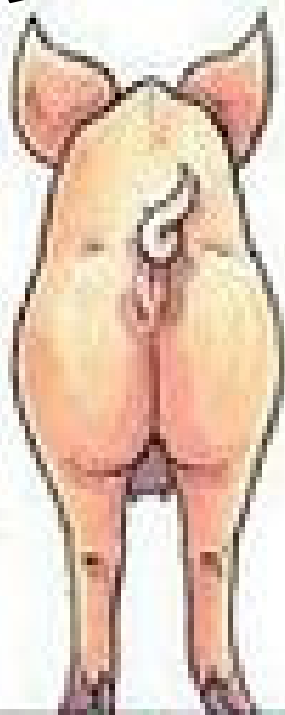
The background is a solid medium blue. On the right side, there are several overlapping, organic, wave-like shapes in a lighter shade of blue. A large, bold white number '2' is positioned in the center-left area of the image.

The background is a solid blue color. On the right side, there are several overlapping, organic, wave-like shapes in different shades of blue, creating a layered, abstract effect. The word "Huld" is centered in the middle of the image.

Huld

Skuldersår

Faringsproblemer Fødselshjælp

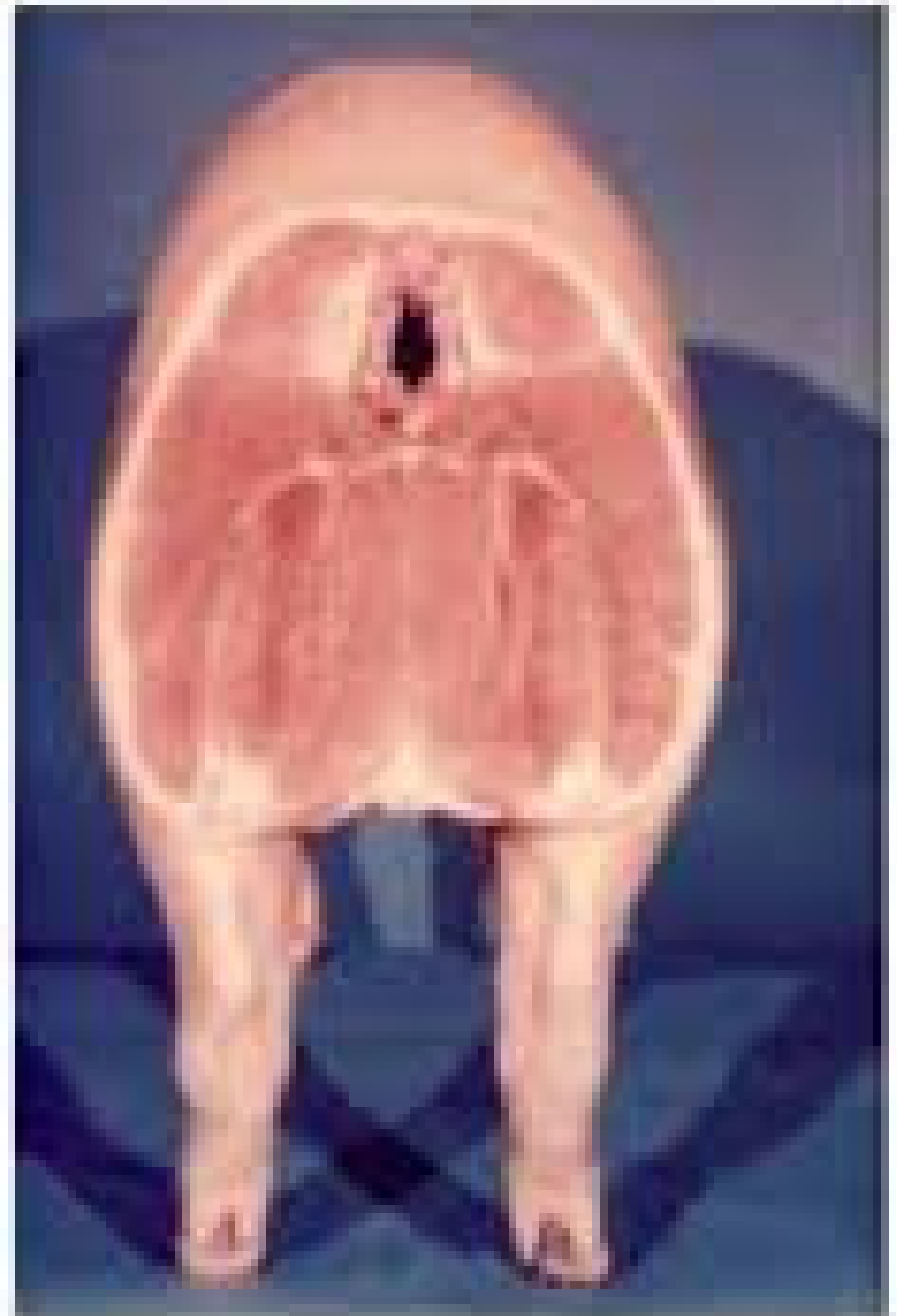


100 ltr mælk

100 ltr mælk

70 ltr mælk

50 ltr mælk



3



Vitaminer og mineraler





Smidige søer.



- “Sommer mineraler”
- Mod “varmestress”
- 4kg NatriumBikarbonat
- 2 kg MagnesiumOxyd
- Max 1,5 kg fodersalt
- 0,5 kg Tryptophan
- Vitamin C
- Vitamin B
 - Betain
 - Cholin





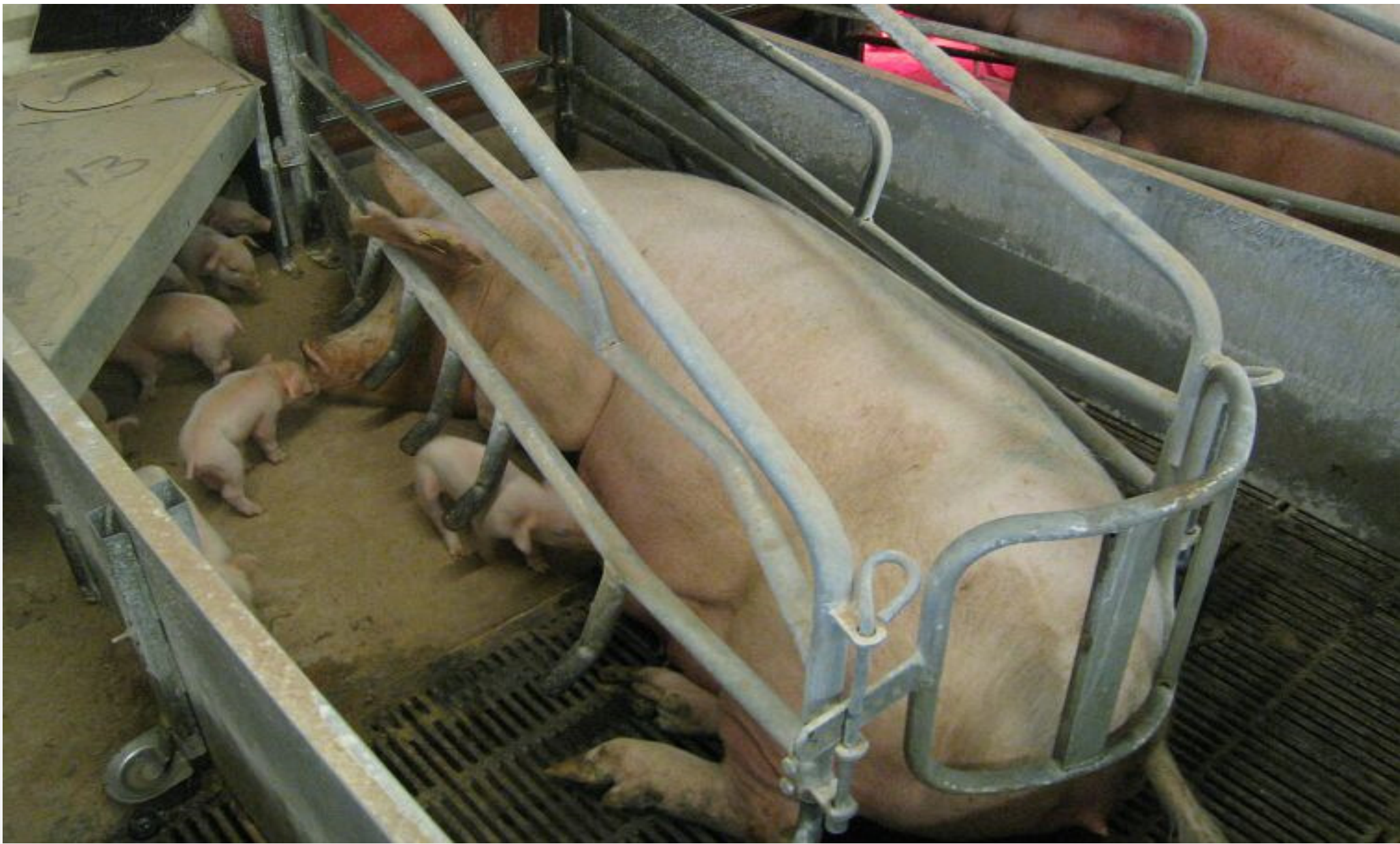
- Læg mærke til svaj i ryggen



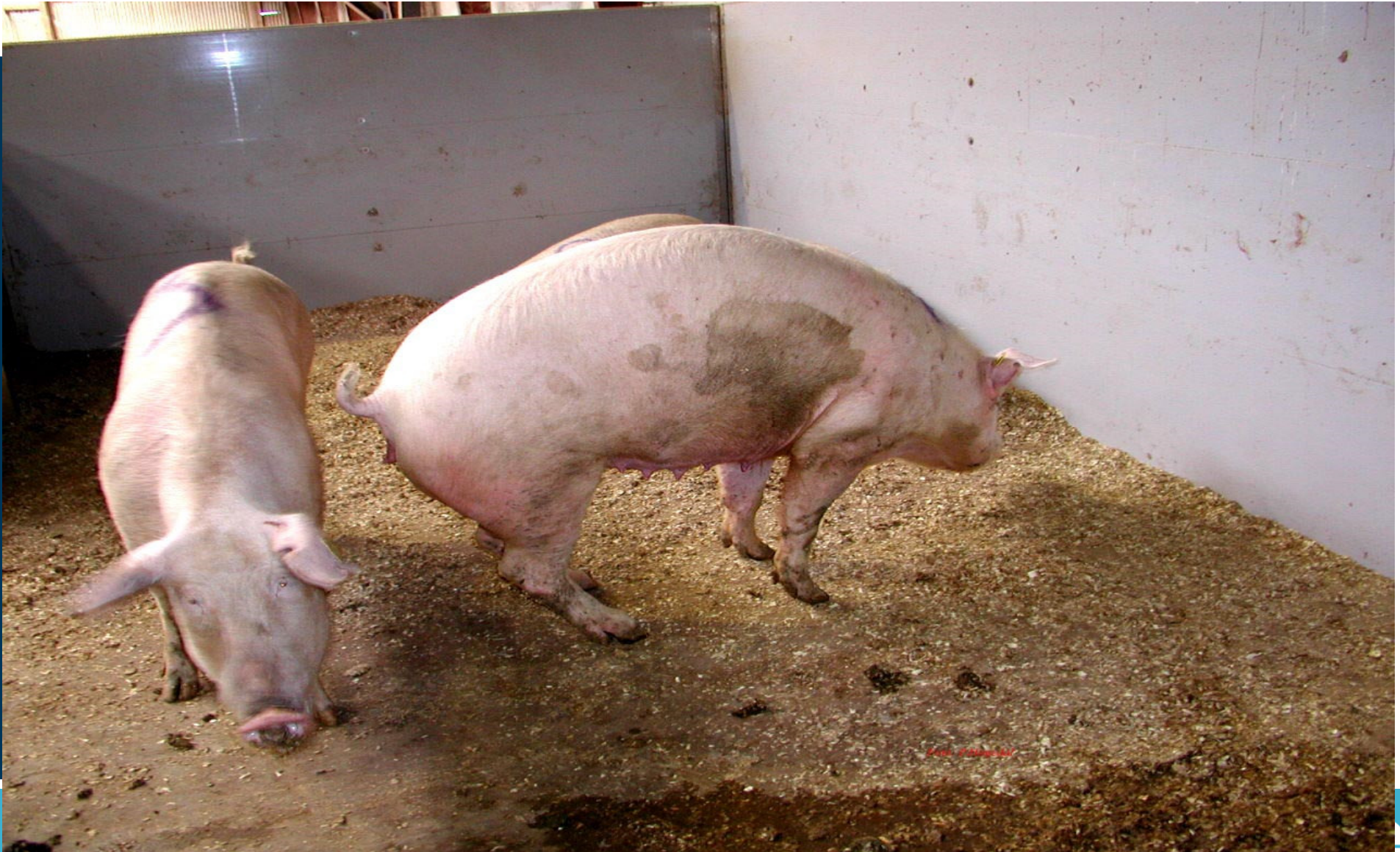
- Færre rygsmerter
- Færre ihjellagte grise



- Bliver stående på benene i længere tid
- Selv få timer før faring



Disse søer bliver aldrig “supersøer”



Ubalance i mineraler og forkert fiber-kilde

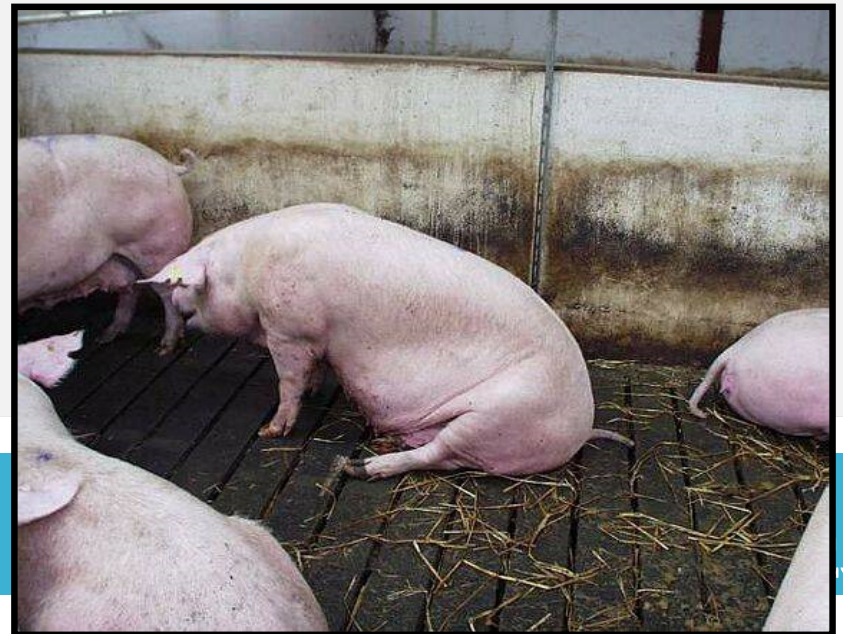




Foto: P. Lingua



4

The background is a solid medium blue. On the right side, there are several overlapping, organic, wave-like shapes in a lighter shade of blue. A large white number '4' is positioned in the center-left area of the image.

**Hvad byder
fremtiden på ?**

Nye veje ?

Basis:

- Byg
- Hvede
- Soyaskrå
- Mineraler

Altid den perfekte vask til årstiden - fås kun hos Shell

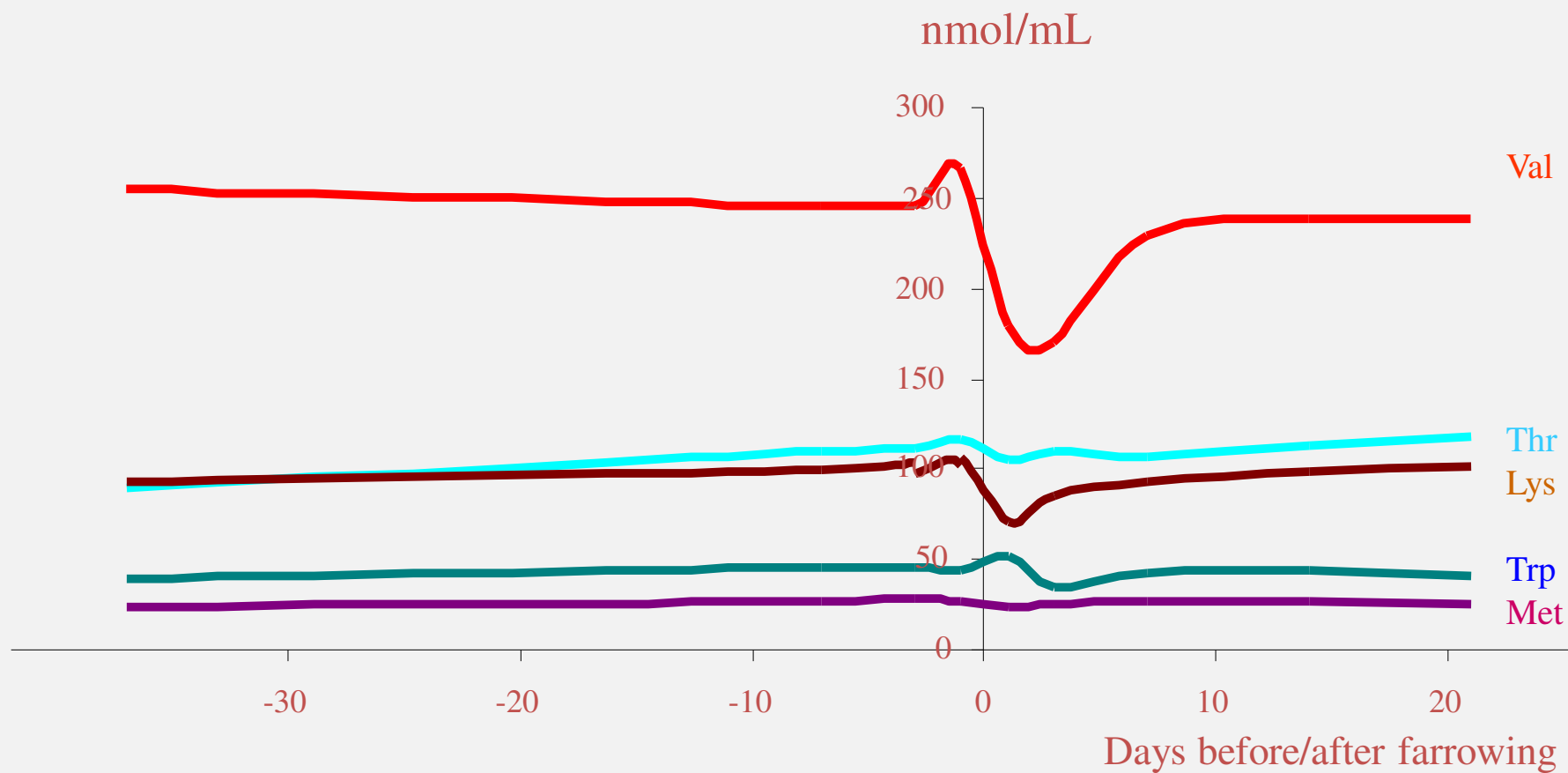
Skumforvask Højtrykshjulvask Børstevask Tørring	Fælgrens (Standardvask er inkl. insektrens)	Højtryksspuling Undervognsskyl	Sæsonvask tilpasset årstidens vaskebehov (se nedenfor)	SHINE polering for ekstra glans (se nedenfor)	RainTec og dobbelt SHINE (se nedenfor)	NORMAL PRIS	VASKEKLUB PRIS
*Perfect Wash SHINE XL						219	149
*Perfect Wash SHINE						159	109
*Perfect Wash						119	79
Super						99	59
Standard						89	54
TIL LET SNAVS:							
Basis						69	39

Soen skal have appetit på foderet



- Trætte søer ?
- Knoldet gødning ?
 - Vand-mangel
 - Højt Toxin-niveau
 - Høj pH-værdi i vand
 - Høj pH-værdi i vådfoder
 - Højt stivelsesniveau
 - Lavt fiberniveau.

Voldsomt Valin drop efter faring





Fostertilvækst

L-Argining i Drægtighedsfoder

- Bevare så mange fostre som muligt
- Reducer forskel i størrelse på placenta
- Forøg kropsvægten på patttegrise ved fødsel
- Undgå muskeltilvækst hos soen under drægtighed
- Undgå øgning af rygspæk hos soen under drægtighed
- Beholde soens Body Condition Score mellem 1 og 2

Author, Country Reference	No. of sow Case/control	L-Arginine supplementation	Supplementation initiated	Conclusion
Oksbjerg et al., Denmark (Oksbjerg et al., 2019) ¹	7/6	25g/day	Day 30 of gestation to day 28 of lactation	<ul style="list-style-type: none"> • Small females increased in birthweight. • Offspring increased in daily gain by 7 %. • Increased myogenesis in small females.
Bérard & Bee, Switzerland (Bérard & Bee, 2010) ²	10/10	26g/day	Day 14 to 28 of gestation	<ul style="list-style-type: none"> • At day 75 of gestation the number of viable foetuses and average foetal weight were higher. • Foetuses had 7 % more myofibers.
Luise et al., Italy (Luise et al., 2020) ³	103/102	0,25%*	During the full gestation period	<ul style="list-style-type: none"> • Improved the number of total-born piglets. • Did not modify faecal microbial structure. • Increased the relative abundance of Bacteroidaceae family and Bscteroides genera.

Author, Country Reference	No. of sow Case/control	L-Arginine supplementation	Supplementation initiated	Conclusion
Kalbe et al., Germany (Kalbe et al., 2013) ⁴	10/10	26g/day	Day 14 to 28 of gestation	<ul style="list-style-type: none"> Stimulates myogenic proliferation and delays muscular differentiation at day 75 of gestation.
Herring et al., USA (Herring et al., 2022) ⁵	10/10	Supplemented with 0,4%	Day 14 to 30 of gestation	<ul style="list-style-type: none"> Supplementation with L-Arg increased: <ul style="list-style-type: none"> number of viable fetuses by 1.9 per litter. number and diameter of placental blood vessels. embryonic survival total placental weight total weight of viable fetuses fetal crown-to-rump length total allantoic and amniotic fluid volumes. Placental activities.
Elmetwally et al., USA (Elmetwally et al., 2022) ⁶	? (3 groups)	Supplemented with 0,4% or 0,8%	Day 14 to 25 of gestation	<ul style="list-style-type: none"> Promotes placental angiogenesis by increasing: <ul style="list-style-type: none"> NOx and polyamines in allantoic and amniotic fluids. NOx, tetrahydrobiopterin and polyamines in placenta. Placental protein abundance GTP-CH1 and ODC1. Placental mRNA levels for angiogenic factors.

Author, Country Reference	No. of sow Case/control	L-Arginine supplementation	Supplementation initiated	Conclusion
Nuntapaitoon et al., Thailand (Nuntapaitoon et al., 2018) ⁷	Con=66 Arg(0,5%)=42 Arg(1,0%)=41	0,5% or 1,0%	Day 85 until farrowing	<ul style="list-style-type: none"> • Arginine enhances growth of placenta, fetal development and mammary gland proliferation. • L-arginine increased the live-born piglets per litter (+9.8%) and reduced stillborn (-8.3%). • L-arginine tended to increase the proportion of piglets with BW_B above 1.35 kg (+6.4%). • L-arginine increased piglet birth weight (+7.0%) and increased SatO₂ (+3%). • L-arginine reduced the backfat loss of sows and increased colostrum concentration of IgG.
Da Silva Fonseca et al., Brazil (Da Silva Fonseca et al., 2022) ⁸		1,0%	From 30 to 60 and days 80 to 114 of gestation	<ul style="list-style-type: none"> • Feed supplementation with 1.0% l-arginine: <ul style="list-style-type: none"> ○ increased the individual weight of piglets born alive. ○ increases the weight of piglets over 1.81 kg. ○ change the concentrations of plasma metabolites.

Author, Country Reference	No. of sow Case/control	L-Arginine supplementation	Supplementation initiated	Conclusion
Moreira et al., Brazil (Moreira et al., 2020) ⁹	10/10	1.0%	From day 85-115 of gestation	<ul style="list-style-type: none"> • Supplementation with 1.0% L-arginine: <ul style="list-style-type: none"> ○ reduces the incidence of unviable piglets due to a decreased percentages of piglets weighing less than 800 g. ○ improved litter uniformity and piglets' body conformation. • No significant differences in: <ul style="list-style-type: none"> ○ placental weight ○ estimated colostrum production and intake.

Extra L-Arginin in early gestation reduces within-litter variation of placentas and embryos

	<u>Improved</u> <u>Uniformity</u> %
Placenta weight* :	12
Embryo weight:	12

*) Increase placenta weight with
5%

Trouw Nutrition R&D,
2011



Pilot Projekt er sat i gang hos DanVet kunder

- Mix 1
 - Fra insemination to dag 30 :
 - 40 gr L-Arginin pr so pr dag
- Mix 2:
 - Fra day 30 to day 112
 - 5 gr L-Arginin tilsat pr kg drægtighedsfoder

Hvordan passer man en supersø ?

- Slank, med min. 15 mm rygspæk
- Gode ben
- Fodres 4 gange dagligt i farestald
- “Sommermineraler”
- Køligt i farestalden
- “Friske søer”
- L-Arginin ?



Tak til :

- Avlscenter Eskegård
- Oplev Hedegård
 - Søren & Heidi Mølgård
- Dyrlæge Trine Hovmand-Hansen
- Trouw Nutrition
 - Dyrlæge Roberto Bardini

Tak for opmærksomheden !

