

High farrowing rate is essential

Reproduktionsoptimering - Brian Nygaard

WORK APPROACH

SYSTEMATIC, THOROUGH AND DUELY DILIGENT

- **SYSTEMATIC = EVERYTHING GETS DONE.**
- **THOROUGH = DO IT RIGHT THE FIRST TIME AROUND.**
- **DUELY DILIGENT = DO THE TASK WHEN IT GIVES THE BEST RESULT.**

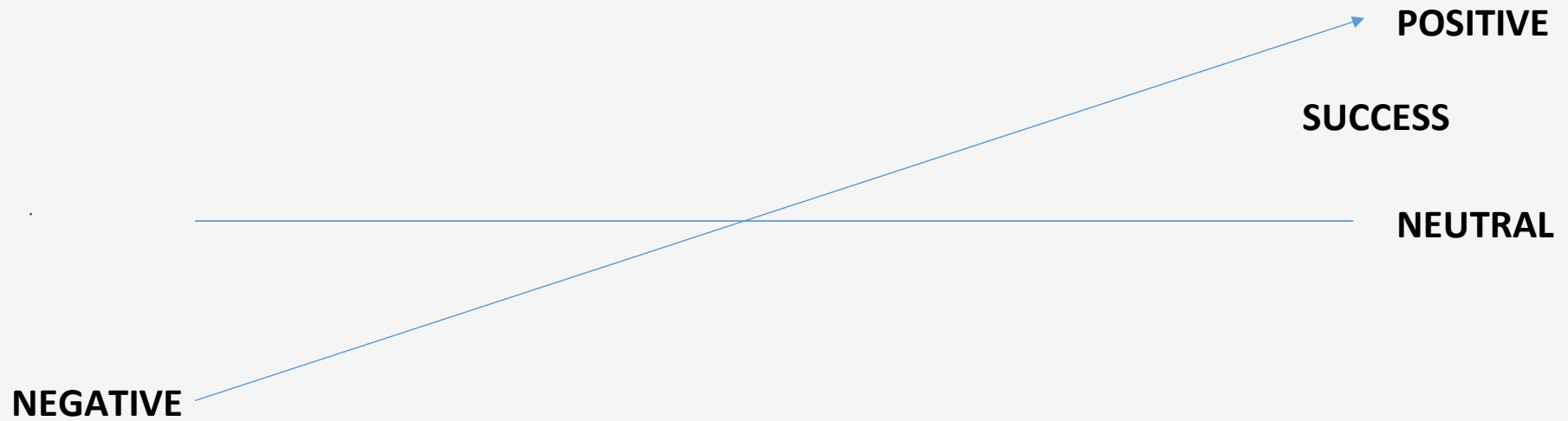
FOCUS AREAS

1. WEANING – INSEMINATION

1. INSEMINATION DAYS

1. GESTATION UNIT

BALANCE



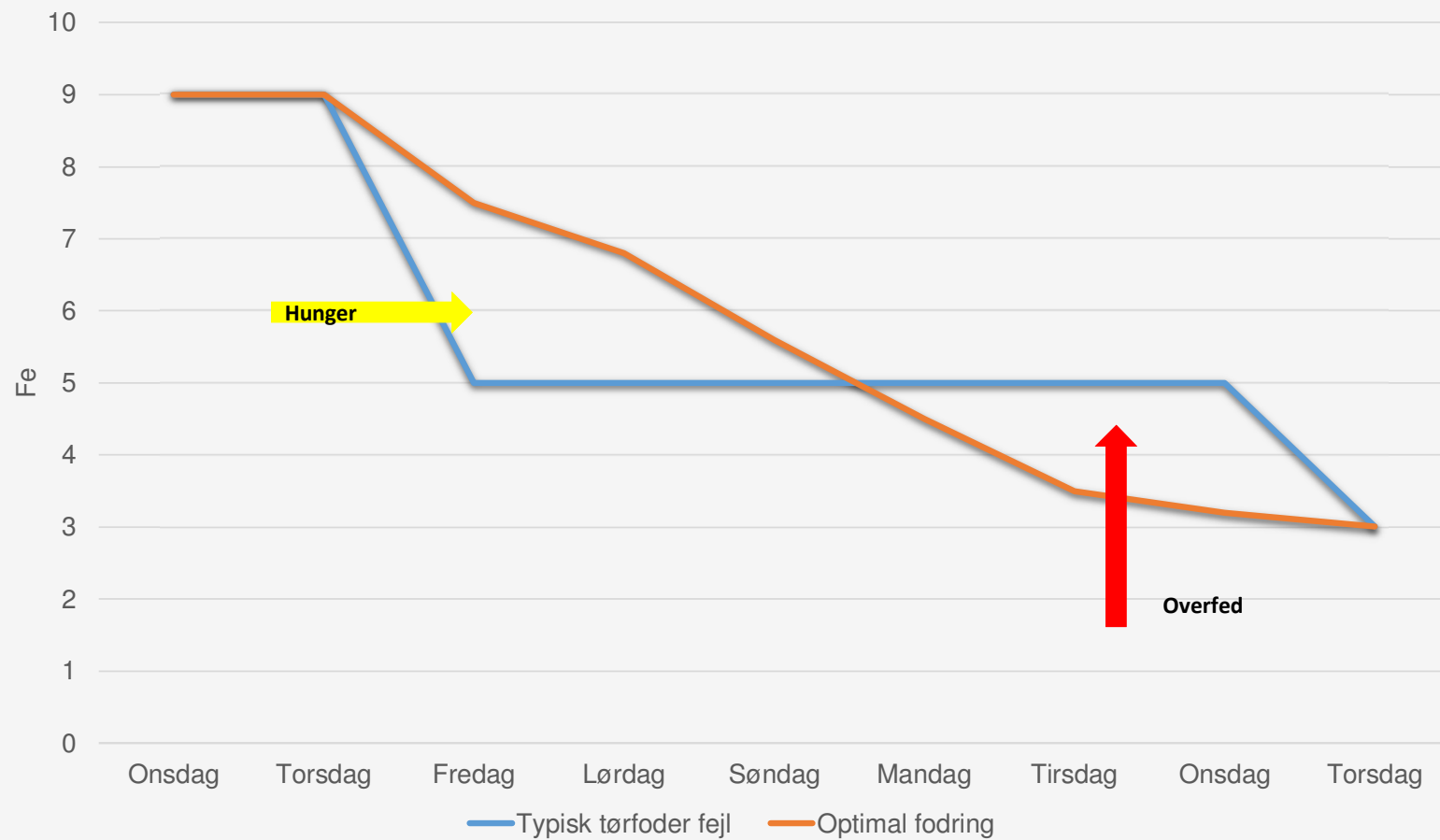
MANAGEMENT
STRESS

FEED
WATER

BACKFAT
ROOM

TEMPERATURE
LIGHT

FEED GRAPH AT WEANING



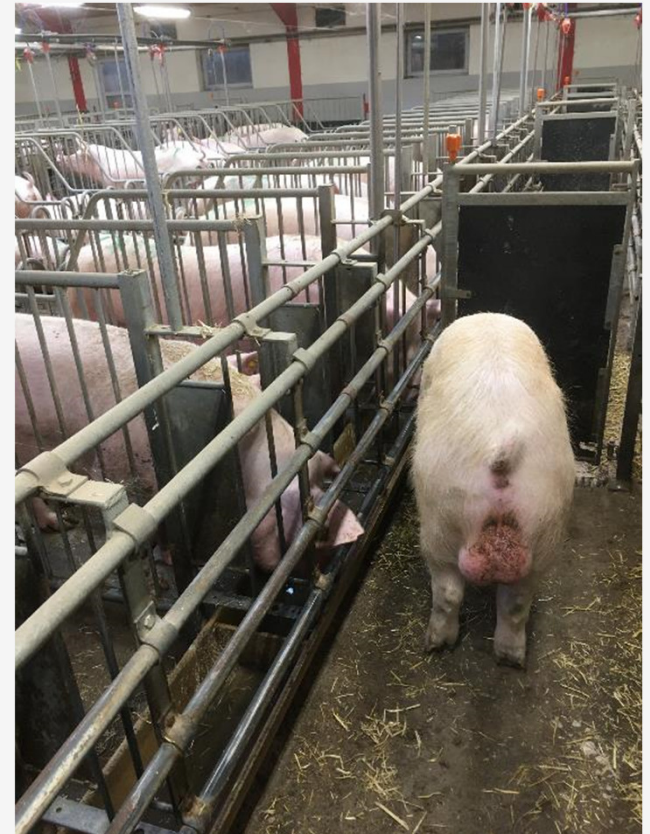
FEED ADJUSTMENT

- **WEIGHT SAMPLES**
- **FILL OUT A FORM = LITER/KG/FEED UNIT**



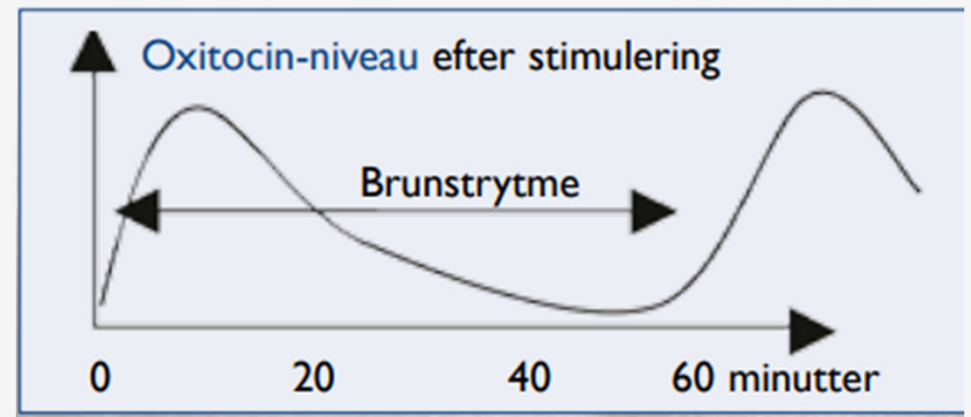
BOAR CONTACT

- FROM WEANING TO INSEMINATION
(BOAR WAGON/SEVERAL BOARS)
- INSEMINATE IN THE RIGHT ORDER.
- LIGHT + 3 WEEKS



OXYTOCIN

- INSEMINATED WITHIN
MAX. 15 MINUTES



PREPARATION

- GENTLE AND CALM TOUCH PRIOR TO STIMULATION
- POWERFUL STIMULATION

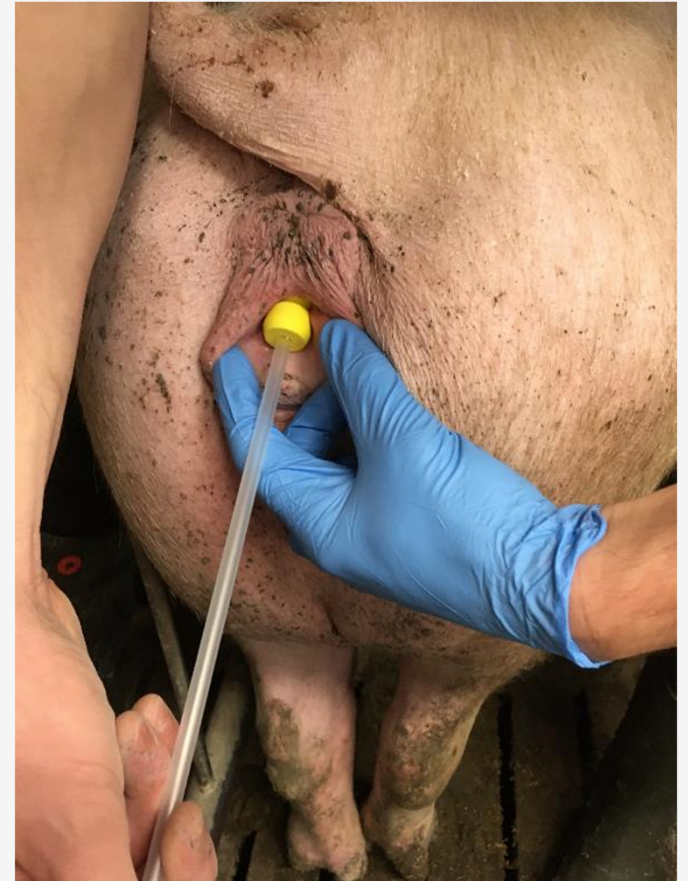


HYGIENE

- **ONE CLEAN GLOVE PER ANIMAL = 2 FUNCTIONS**

1. SIGNALS HYGIENE

1. NO SPREAD OF INFECTION



TRADITIONAL INSEMINATION

- **REVERSE RIDING POSITION
(YOUR FINGERS ARE ALSO YOUR EYES.)**
- **FOCUS ON WHAT YOU ARE DOING.**



HOLDERS/RIBBON INSEMINATION

- IN FRONT OF AS MANY AS POSSIBLE AT ALL TIMES



AWARE

- CORRECT POSITION AT THE TROLLEY
- BELT
- HANG THE CATHETER UP AS AN AID
- SEMEN STORAGE



GILTS

- **MARK THEIR ESTROUS**
- **BACKFAT, WEIGHT, AGE**
- **AVOID NEGATIVE STRESS IMMEDIATELY AFTER INSEMINATION.**



PREGNANCY

- **ALL ANIMALS MUST BE CHECKED AND EVALUATED DAILY.**



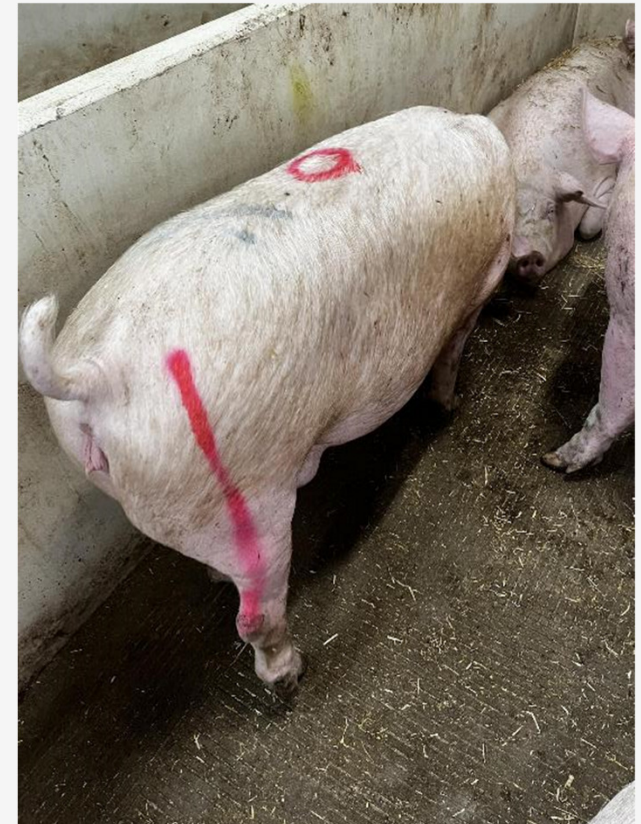
3 GROUPS OF ANIMALS

1. NORMAL

1. UNDER OBSERVATION

1. UNDER TREATMENT

• TYPICAL GROUP 2



USE

- **NOTES**
- **STATISTICS**
- **COMMUNICATION**
- **REMEMBER IT IS TEAMWORK. NO ONE CAN DO IT ALONE.**


Scan Me



Rep opti

THANK YOU FOR LISTENING

Skal din
faringsprocent hæves,
så ringer du ikke
forgæves

 Reproduktions Optimering
 Reproduktions Optimering
v. Brian Nygaard

Brian Nygaard
tlf. 27122213
brian@repopti.dk

 reproduktions  ptimering

